

THE KIRLIAN AURA KAMERA™



© 1999 by Triune-Being Research Organization Ltd.

MANUFACTURED BY

TRIUNE-BEING RESEARCH ORGANIZATION LTD.

9549 107th AVENUE, EDMONTON, ALBERTA, CANADA T5H 0T6

Phone: 780-421-4284 Fax: 780-425-8628

e-mail: triune@triune-being.com

See our internet site at www.triune-being.com

Contents

1.0 EQUIPMENT INCLUDED	5
2.0 PRECAUTIONS	6
3.0 PREPARING THE KIRLIAN AURA KAMERA	7
4.0 TAKING A KIRLIAN PHOTOGRAPH	9
5.0 MULTIPLE EXPOSURES	11
6.0 INTERPRETATION OF PHOTOGRAPHS	13
7.0 FILM TYPES	14
8.0 BRIEF HISTORY OF KIRLIAN PHOTOGRAPHY	15
9.0 USES FOR THE KIRLIAN AURA KAMERA	16
10.0 RECOMMENDED READING	19
11.0 REFERRAL FEE	20
12.0 APPENDICES (Separate Enclosure)	
13.0 Interpretation Guide & Record Book	
14.0 35mm Attachment for The Kirlian Aura Kamera™	

1.0 EQUIPMENT INCLUDED

1. High Frequency Generator.

Specifications:

INPUT: 100/120 volts, 50/60 Hz, .35 Amps (optional 230/240 volt available)

OUTPUT: 10KV TO 50KV, 500KHz.

SHIPPING WEIGHT: 6LBS

CASE DIMENSIONS: 14.5in x 8.5in x 3.5in

2. Instant Film Camera Body and attached Voltage Distributor Plate.
3. Carrying Case, Manual & Interpretation Guide, Laminated 11 x 17 inch poster.
4. Type 669, Polacolor 100, or Polarcolor PRO 100 sample film pack - This may already have been installed in the Camera Body and one or more exposures made for testing purposes.
5. General information on Kirlian Photography.
6. ***Life's Hidden Forces - A personal journey into Kirlian Photography.***

By Agnes Kraweck

This book has lots of tips on interpreting your Kirlian photos.

2.0 PRECAUTIONS

Although there have been no reported cases of any problems the following precautions should be taken.

1. DO NOT use the camera near or on metal surfaces (tables, chairs etc.)
2. DO NOT have your client touch any metal objects or sit on a metal chair while the picture is being taken.
3. DO NOT use with people that have heart pacemakers or other electrical devices.
4. DO NOT use with pregnant women.
5. DO NOT use while wearing a microphone - a small shock may be experienced.

VERY IMPORTANT

6. DO NOT touch or place hand on or near the lead connecting the voltage generator to the camera body, when the generator is switched on. (See figure below)



3.0 PREPARING THE KIRLIAN AURA KAMERA

1. Remove film pack from foil wrapping. Hold the film pack by the edges only to avoid damage to the film. (If this is a new unit, a film pack has already been installed. Go to item 5a or 5b, depending on where the on-off switch is located.)
2. Open camera body by unclipping the silver-coloured bar.
3. Insert the film pack in the camera body and close. The black film pack tab should be visible and make sure that the white tabs are not caught between the film pack and the camera body.
4. Pull the black tab out. This exposes the film beneath the black glove and also exposes the first white tab. NOTE: The camera case may still be opened after the film pack is installed. The film pack itself may also be removed and reinstalled, and only one photo will be exposed.

Push-On Button on Generator

- 5a. Plug the voltage generator into an outlet and before inserting the camera body (which contains the film pack) adjust the black knob at the rear of the unit so that it produces an even buzzing sound while the small black button is depressed in the center of the unit. Turn the black knob clockwise for greater voltage output and counter-clockwise for lower voltage output. A low voltage is usually all that is required, a high voltage may overexpose the film. DO NOT point the unit at anyone as a spark may jump from the end of the unit. The spark adjustment need only be performed infrequently or if no spark or sound is produced when the generator button is pressed. (The generator is adjusted before shipment and is usually ready to take pictures immediately, except with 230/240 volt units, which should be adjusted locally)

On-Off Switch in Power Cord (Special Order)

- 5b. Plug the voltage generator into an outlet and before inserting the camera body (which contains the film pack) adjust the black knob at the rear of the unit so that it produces an even buzzing sound while the power switch is turned on. Turn the black knob clockwise for greater voltage output and counter-clockwise for lower voltage output. **DO NOT** point the unit at anyone as a spark may jump from the end of the unit. The spark adjustment need only be performed infrequently or if no spark or sound is produced when the generator switch is pressed. (The generator is adjusted before shipment and is usually ready to take pictures immediately.) With the on-off switch in the power cord, you may use an external timer to time your exposures with more precision.
6. Attach the camera body to the generator by gently inserting the metal connector into the generator. Only a light connection needs to be made. **DO NOT** force the connector, otherwise it will be difficult to remove.

Cleaning

7. After each film pack has been used, clean the inside of the camera with isopropyl alcohol, especially if there is any chemical residue. The spreader bars or rollers may also be removed to facilitate cleaning. Avoid skin contact with the caustic chemicals in the film pack, and wash skin with water if necessary.

4.0 TAKING A KIRLIAN PHOTOGRAPH

1. Place the subject's hand in the black glove being careful to not let any light in, and place the four fingers lightly onto the film surface.
2. Switch the voltage generator on for 1 second or less by depressing the black button (or in-line switch)
3. Remove hand from glove, again being careful not to expose the film to light.
4. Pull the white tab straight out.
5. Pull the yellow or black arrowed tab (which was revealed when the white tab was removed) straight out away from the camera body with a smooth even motion. DO NOT pull the tab up, this may cause the film to jam or tear.
6. Develop the film for 30 to 90 seconds depending on the film type (Section 7) at room temperature (75 degrees F. or 24 degrees C.) Increase developing time for lower temperatures or decrease time for higher temperatures. Remove print from it's backing paper. Dispose of the backing paper carefully. Avoid skin or clothing contact with the developing chemicals on the backing paper.
7. Return to step 1. to take another Kirlian photograph. There are eight prints possible from each film pack, the number being indicated on the white tab.
8. It is also possible to place the fingertips on top of the black glove, rather than inside the glove. Pictures taken this way are not quite as clear. However it does allow other items to be photographed, such as feet, paws, vitamins, crystals etc. Inanimate objects require grounding of some sort, which may be obtained by touching the item being photographed. NOTE: Never ground people or animals by touching metal objects etc.

9. Return the camera to its case when finished, or fold the black glove over the top of the camera body to minimize any seepage of light onto the film plate.

5.0 MULTIPLE EXPOSURES

Multiple exposures of the same film may be taken. The procedure developed by Agnes Kraweck PhD is as follows:-

1. Place right hand in glove and place the fingers at the top of the film. Ask no question at this time. This exposure will reveal the "normal" or "reference" state of the person. Press button for 1 second.



Figure 1. One exposure (kexp1)

2. Move fingers down 1/2 inch and ask the subject to go into a "happy" state. Press button for 1 second.



Figure 2. Two exposures (kexp2)

3. Place fingers a further 1/2 inch lower and ask the subject to go into a frustrated state. Press button for 1 Second.

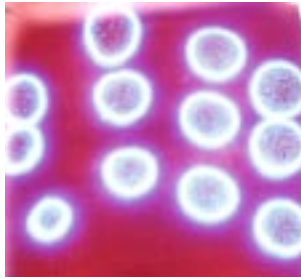


Figure 3. Three Exposures (kexp3)

4. Move fingers a further 1/2 inch lower and ask the subject to focus on being perfect and whole and one with the universe (or God.) Press button for 1 second.

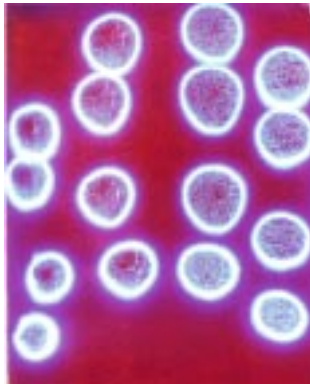


Figure 4. Four exposures on one film. (kexp4)

5. Now remove the white tab and pull the yellow tab all the way out. Wait 60 seconds at room temperature and then remove the print from it's backing paper. Dispose of the backing paper carefully. Avoid body or clothing contact with the chemicals used in developing the print.
6. You are now ready to interpret the picture.

6.0 INTERPRETATION OF PHOTOGRAPHS

See figure 5. Interpretation key.

Index Finger - indicates or appears to indicate the 'mental' body and the center of the solid ring would represent the position of the ears.

Middle Finger - represents the physical structure of the body. The body (waist area) would be represented by the center of the solid ring.

Ring Finger - represents the emotional feelings or the astral body. Mood changes are represented by imbalances in this area.

Small Finger - represents the intuitive body (the heart meridian).

The human aura is a magnetic field of energy created by the sum total of electric currents passing through the nerve meridians of the body.

The meridians are positive and negative in relation to one another. In the autonomic and sympathetic nervous system, the current travels from right to left, but in the parasympathetic nervous network (vagus nerve) the current travels from left to right.

When these two energies merge in the meridians, the opposing direction of energies create a path whereby energy of a higher plane of vibration is directed and shows on the Kirlian picture as sporadic and/or pinpoints of light.

7.0 FILM TYPES

1. Polaroid 669 - General purpose colour film, 60 second development time, ASA 80, 10 exposures. US\$10.99
2. Polaroid 667 - General purpose black-and-white film, 30 second development time, ASA 3000, 10 exposures. US\$7.25
3. Polaroid Polacolor PRO 100 - Proofing colour film, 90 second development time, ASA 100, 10 exposures. US\$10.99
4. Fuji FP-100C - Colour film, 90 second development time, ASA 100, 10 exposures. US\$12.49
5. Polaroid Polacolor 679 / Polacolor 100, (more sensitive than 669), ISO 100, 90 second development time. 10 photos.

Note: All development times are for an ambient temperature of approximately 25 degrees Celsius or 80 degrees Fahrenheit. All film sizes are 3.25x4.25in. or 8.5x10.8cm. The Fuji film tends to be more expensive than the Polaroid film in North America.

The best prices as above we have found for Polaroid 669 film and others, in the United States is at B & H Photo Warehouse in New York City, toll free number 800-606-6969 or 212-239-7500, fax: 212-239-7770 and web site: www.bhphotovideo.com

8.0 BRIEF HISTORY OF KIRLIAN PHOTOGRAPHY

Dr. Kirlian, the discoverer of the Kirlian Effect, was a largely self-educated electrician and part-time inventor who lived in the Russian city of Krasnodor.

In 1939 using equipment at the local hospital, and while working as a maintenance man and electrician he constructed an unusual device for making photographs of any object placed in a high frequency electrical field. When he developed the photographic plate he was startled to see that a mysterious glow emanated from the fingertips. As he continued experimenting, perfecting different techniques and equipment, he was able to photograph an ever expanding range of subjects both live and inanimate.

Kirlian had confirmed what the psychics had been insisting for thousands of years, that all living things are surrounded by an invisible aura.

Dr. Thelma Moss, a psychologist at the University of California's Center of Health Sciences at Los Angeles, by her own research was confirming that the Kirlian Effect was a means of capturing on film emanations of what might be called the "life force" itself.

Other U.S. investigators were Dr. Stanley Krippner and William Tiller of Stanford University Department of Materials Science.

In May of 1972 the first western hemisphere conference on Kirlian Photography was titled "Acupuncture and the Human Aura" and gave much credibility to this method.

Triune-Being Research Organization Ltd. has been applying the Kirlian Effect to the detection of nutritional deficiencies and energy imbalances in the human body.

The cameras have now been simplified to give clear, sharp pictures enabling research to be conducted in the fields of medicine, psychology, agriculture, biology, and even criminology.

9.0 USES FOR THE KIRLIAN AURA KAMERA

THE KIRLIAN AURA KAMERA

A new device to create or duplicate world famous experiments!

Capture on film the life force itself!

Now available to explore deeper into the unknown world of energy!

The photographs in this booklet are examples of **Kirlian Photography**, a technique developed by two Soviet researchers, Semyon and Valentina Kirlian, in 1939. Although this technique has been improved its basic concept is the same.

The object is placed right over the film plate, and an electric charge is sent through it. The film records the pattern of electric discharges from the object. The pattern appears as a halo of light: red, yellow, white, blue, or a combination of these colours. Any distortion of the emanation patterns signifies energy interference or blocks of energy.

The **Kirlian Effect** is being used in many fields such as medicine, psychology, agriculture, criminology, biology, nutrition, sound therapy, stress management, massage therapy, therapeutic touch, acupuncture, and drug addiction.

MEDICINE

Dr. Fredrich Bell Ph.D. worked at NASA on the Apollo and Saturn Moon Projects. His scientific/medical background pioneered much research into the energy system within the human body.

Dr. Bell had taken thousands of Kirlian pictures and made careful comparisons with the results of the same individuals involving barium X-rays, iridology reports, blood tests, kinesiography, electromyograph, electroencephalograph and biofeedback, just to name a few, and the results were the same. There is a direct correlation between the human aura photograph and the aforementioned tests.

A recent article from "The Canadian Nurse", (December 1984 issue), stated that research in Russia has demonstrated that communication can, in fact, take place between cells (when cells from a person's body were put into an adjacent but separate quartz container and one set were attacked and killed by a virus, the cells in the untreated container died simultaneously).

PSYCHOLOGY

Dr. Thelma Moss a psychologist at the University of California, centre for Health Sciences in Los Angeles, was one of the first U.S. researchers to test the Kirlian Photography Effect. While capturing the glowing emanations on film and revealing what we might call the life force itself, she also found that there was a direct connection between moods and states in one's health.

AGRICULTURE

Kirlian Photography may be used to help detect when crops are ripe or when plants are diseased by examining the images produced by the plants in the Kirlian photographs.

CRIMINOLOGY

Kirlian Photography is a useful tool in finger printing. Some researchers say that it will reveal a person's finger print even after it has been badly damaged and can no longer be seen on the surface.

NUTRITION

Agnes Kraweck PhD, an independent researcher with **Tri-une-Being Research Organization Ltd**, has found in her research a direct link between stress, digestion and nutritional imbalances using the Kirlian Effect.

Emotions and power of thought or any strong emotional feelings or deep thoughts effect the electrical field of the human body. Using Kirlian Photography it is easy to demonstrate the effect they have on the mental, physical, emotional and intuitive areas of the body. Another exciting area is one's spiritual

unfoldment, for as man strives to greater wisdom and awareness, physical inner balance (nutrition), mental (how one unfolds according to his beliefs and thoughts), and spiritual (understanding of one's purpose and inner potential), the Kirlian Photographs will clearly show where the balances or imbalances of energy are focused.

IRIDOLOGY AND REFLEXOLOGY

When using Kirlian Photography the electrical stimulation creates changes between the etheric body of man and the physio-electrical body of man. In Iridology and Reflexology man's reflex points are used to view organ conditions within the body. A blocked or weakened organ means a blocked nerve thus indicating little or no electrical change at the reflex point. Stress on the body also effects the aura pattern so a toxic person will also have a slow response, and this will be recorded on film.

Additional research is continuing in energy fields, magnetic and electric fields, stress, radiation and trace contamination using Kirlian Photography, which is still a new science. As well, many scientists around the globe feel it may eventually be used in dentistry, geology, forensic medicine and psychic research.

Be innovative! ***Create your own research*** and make your career exciting using ***Kirlian Photography***. Develop your information for this future science or use it to discover your own personal colour and vibrations, checking your energy levels, moods, mind powers, intuition, and psychic potentials.

10.0 RECOMMENDED READING

The Aura and What It Means to You. Mokelumne, California: Health Research, 1955.

Bailey, Alice. *Initiation Human and Solar.* New York: Lucis Publishing Company, 1922.

Bell, Dr. Frederick. *Death of Ignorance.* New Age Holistic Awareness, 1979.

Bulbrook, Mary Jo, PhD. EdD. *Health and Healing in the Future,* Canadian Nurse. 80:26-29. December 1984.

Burr, Harold, and Northrup ESc. *The Electrodynamic Theory of Life,* The Black Box. Connecticut: Yale University Press, 1935.

Into the Unknown. Montreal: The Reader's Digest Association Incorporated, 1981.

Kilner, Dr. *Aura.* London: Medical Staff of the St. Thomas Hospital. *The New Book of Knowledge Annual 1986.* Canada: Grolier Incorporated, 1986.

Tanous, Dr. Alex, and Katherine Fair Donnelly. *Is Your Child Psychic?.* New York: Macmillan Publishing Company Incorporated, 1979. ,p.74.

Moss, Thelma, Ph.D. *The Body Electric.* Los Angeles: J.P. Tarcher, Inc. 1979.

Cousens, Gabriel, M.D. *Spiritual Nutrition and The Rainbow Diet.* Colorado: Cassandra Press, 1986.

Oldfield, Harry, Coghill, Roger. *The Dark Side of the Brain.* Longmead, Shaftesbury, Dorset: Element Books Ltd. 1988.

Brennan, Barbara Ann. *Hands of Light.* New York: Bantam Books, 1988.

BE CREATIVE! Conduct your own research and make your career exciting using KIRLIAN PHOTOGRAPHY. Develop your knowledge of this future science or use it to discover your personal colour and vibration, your energy level, moods, mind powers, intuition, and psychic potential.

11.0 REFERRAL FEE

Thank-you for sharing an interest in **THE KIRLIAN AURA KAMERA**. We would like to keep you up to date on the latest research information regarding **Kirlian Photography**, as well as any lectures that may be taking place. In order for us to do so, please complete this information sheet and return it to **TRIUNE-BEING RESEARCH ORGANIZATION LTD.**, 9549 107th Avenue, Edmonton, Alberta T5H 0T6, Canada. We will also send information to anyone else who may be interested in **THE KIRLIAN AURA KAMERA**. If you provide us with the information below we will send you a cheque for \$50 Cdn. as a referral fee, if they purchase a **Kamera** from us at retail.

Mailing Address

NAME _____

ADDRESS _____

CITY: _____ PROV./STATE: _____ POSTAL/ZIPCODE: _____

TELEPHONE: RESIDENCE _____ BUSINESS _____

PLEASE write a short paragraph describing what specific or intended application(s) you have for **The Kirlian Aura Kamera**.

DATE OF PURCHASE _____ PURCHASE PRICE _____

MODEL: SWITCH BUTTON ON BODY / SWITCH IN CABLE

PLEASE SEND INFORMATION TO THE FOLLOWING PERSON(S):

NAME _____

ADDRESS _____

CITY _____ PROVINCE/STATE _____ POST/ZIP
CODE _____

TELEPHONE: RESIDENCE _____ BUSINESS _____